

Portland Clean Energy *DRAFT* Grant Proposal Community Garden for Hayden Island

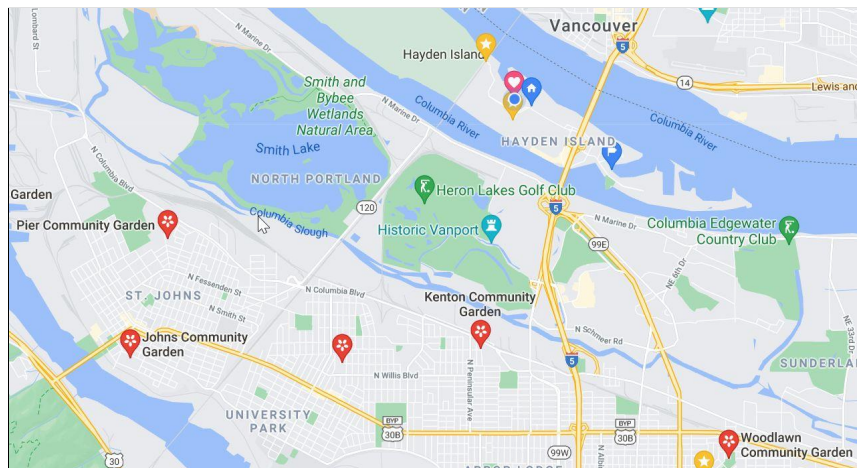
INTRODUCTION:

This proposal provides residents on Hayden Island Manufactured Home Park with a Community Garden. The goal is to serve all 1,000 residents with access and guidance on growing and cooking healthy, organic produce while working together to help each other. The [city has many community gardens](#), but none near Hayden Island, which also has a large hispanic and low income population in the 500-unit park.



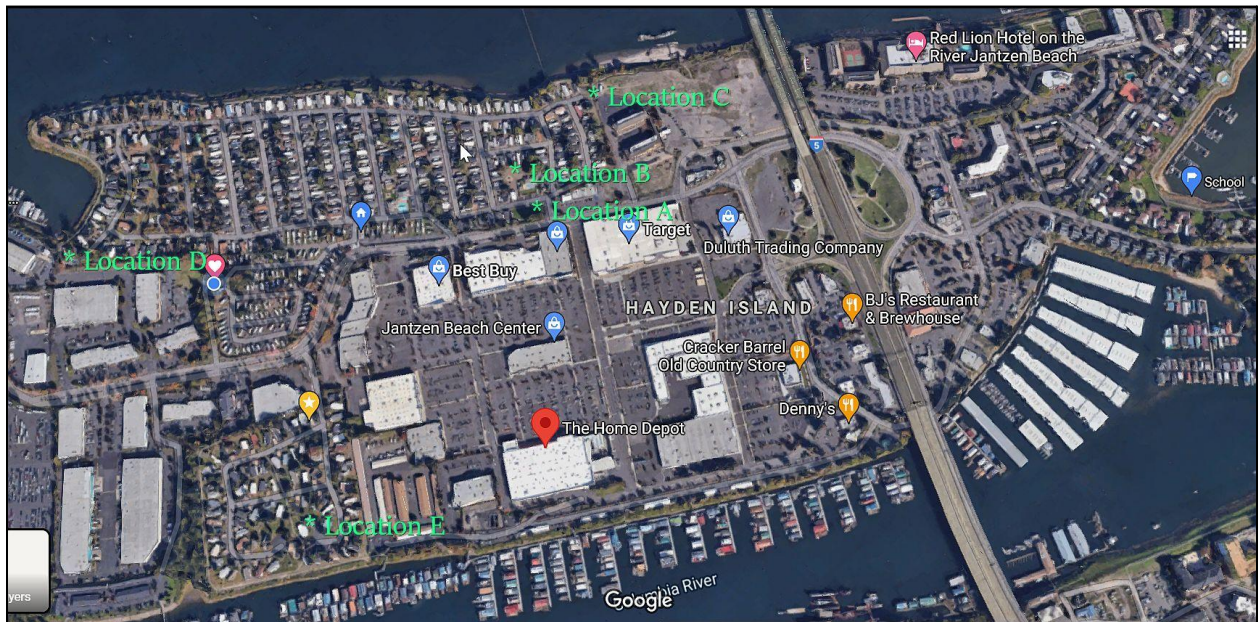
BENEFITS:

Community gardens build relationships, celebrate diversity and create an opportunity to learn from each other. Growing and nurturing produce and flower beds enriches everyone, bringing people together for mutual benefit.



OVERVIEW:

Five sites on the Manufactured Home Park may have good potential for a community garden. These sites do not appear to conflict with property easements, they have good water, drainage and sunshine, and are near streets and parking. Some have enough room for a tool shed and a picnic table, while others may only have room for 5-10 garden plots (approximately 3' by 8' each).



Location “A” Plot is at the entrance to the Manufactured Home Park at 1501 North Hayden Island Drive. It’s across the street from the park’s community center which has a fully equipped kitchen. That facility may be used for both cooking and meetings.



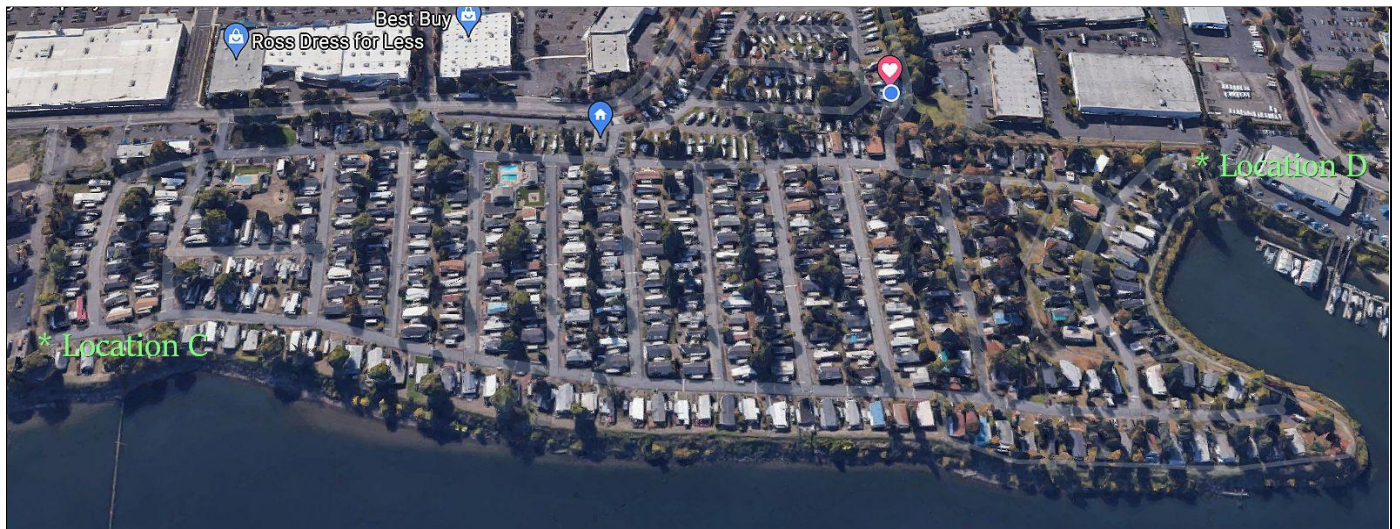
The total area of Location "A" measures about 200 ft by 50 ft, or 10,000 sq ft. The site has good soil, abundant sun, irrigation and drainage. The garden would likely be fenced, with gardeners holding the combinations to the locks. The disadvantage may be its visibility to non-residents.



Location “B” Plot is behind the Community Center and the pool (to the north). It gets good sunshine and is less conspicuous, located behind the community center, residences and near a common playground.



Location “C” and “D” are on opposite sides of the main manufactured home property. Location C is on the extreme East side of the park. Location D is on the extreme West side of the park.



Location “C” at the far East Side is one of the two smaller spaces. It is next to the concrete wall along the Rodeway Inn property. This area measures approximately 30 feet long and 15 feet deep. The garden would be no wider than the width of the road (approximately 30 feet). It would not intrude on private property. The soil at this location is angled up about 30 degrees. We would make a terraced cut into the earth to support 8 grow boxes, each about 6 feet long and 3 feet wide. A linear garden would be created at the base of the wall.



Location “D”, on the West End. This is a small plot at the end of Broughton Drive, next to the walking path and circles the cove. The soil here is very sandy, but is raised 2-3 feet above the end of the street by a concrete brick wall.



This location has the smallest plot of the 5 reviewed. Perhaps 4-5 planting boxes could be positioned here, but there is no room for a tool shed or picnic table.

The area also contains a very large 40 foot container for tree and plant waste disposal, which also requires space for the truck to haul the container. Much of the sandy soil would have to be removed (perhaps to the beach at the base of the path). It gets good sun most of the day and has irrigation sprinklers.

Location E, on South Shore. This plot is located next to the South Shore Community Center which also has a full kitchen. This large area has lots of parking space, sunshine, drainage and good soil.



GRANT OPPORTUNITIES

The Portland Clean Energy Community Benefits Fund (PCEF) is a Mini Grant Program. It provides a quarterly grant opportunity offering up to \$5,000 for activities that align with PCEF goals of taking climate action and advancing racial and social justice. It was announced on June 14th and the first grant is due August 1, 2021.

Organizations of all sizes are eligible to apply while priority will be given to small organizations who reflect and are led by PCEF priority communities. The mini grants program has a total annual budget of \$400,000. \$100,000 is available each quarter. Applicants can apply for one grant of up to \$5,000 per quarter.

The PCEF legislative code identifies two “priority populations”:

1. Priority populations for clean energy, green infrastructure, and regenerative agriculture projects: People with low income and people of color are priority populations for **grants that address clean energy, green infrastructure, and regenerative agriculture.**
2. Priority populations for workforce and contractor development projects: Women, people of color, people with disabilities, and people who are chronically underemployed are identified as priority populations for grants that address workforce and contractor development.

Eligibility

- Only non-profit organizations, including fiscal sponsors, may apply
- Projects that are physical improvements must be done within the City of Portland to benefit residents of the City of Portland
- Projects that do NOT include any physical improvements must benefit residents of the City of Portland
- Funding request must advance PCEF goals of tackling climate change and advancing racial and social justice (see [PCEF objectives](#) for more information)
- Organizations can submit a maximum of one mini grant application per quarter

<https://portlandcleanenergyfund.org/>

<https://www.portland.gov/bps/cleanenergy>

<https://www.portland.gov/bps/cleanenergy/news/2021/6/16/portland-clean-energy-community-benefits-fund-pcef-announces-new>

ORGANIZATION:

An organizational structure to support community gardens would be required. Volunteer gardeners set aside a particular plot, designate a row from their own plot, or donate their excess produce for Produce for People. We anticipate this as a volunteer position, but would fund it with anticipated expenses, perhaps in the neighborhood of \$100/month.

MATERIALS:

Initial material needs generally include:

- Shovels, rakes, hoe, garden fork, pitch fork, wheelbarrows, garbage cans, \$250
- Stakes, string, \$75 100-foot tape measure, \$50
- Shed (concrete pad, materials, door, paint, caulk, lock, hardware, gravel, roof), \$2,600
- Two accessible (ADA) beds (cedar or Trex lumber raised beds 4x8x2 ft tall), \$800
- Lime and fertilizer for soil amendments, \$200
- Compost, manure, leaves - donated Straw or wood chips for paths, \$100
- Plant seeds and starts, donated

Total Garden Expenses, not including fencing, access road and gate: \$5,000/year



SUMMARY:

The [Portland Clean Energy Community Benefits Fund](#) may be our best shot to pay for a community garden. The Hayden Island Manufactured Home Community meets its criteria and The Park has a need.

The time to write a grant and submit it IS NOW. If we delay, our chances are lessened. That's because all non-winners from the first rounds will be folded into the next round of funding. That nearly doubles the potential competition in the 2nd round.

LINKS:

1. Portland Green Energy Fund
<https://portlandcleanenergyfund.org>
2. Cully Community Garden
<https://www.herrerainc.com/cully-community-garden-wins-2014-oregon-brownfields-award/>
3. How to Organize a Community Garden
<https://content.ces.ncsu.edu/how-to-organize-a-community-garden>
4. Wikipedia
https://en.wikipedia.org/wiki/Community_gardening
5. Portland Community Gardens
<https://www.oregonlive.com/hg/2021/04/see-how-portlands-community-gardens-are-growing-this-spring.html>
6. Portland Community Gardens
<https://portlandcommunitygardens.org/resources/>
<https://www.portland.gov/parks/community-gardens>
<https://www.portland.gov/parks/community-gardens/policies>
<https://www.facebook.com/growportland/>
<https://www.portlandoregon.gov/parks/article/282909>

Submitted by:

Sam Churchill, #868
(schurchill@gmail.com)
503.380.1246
July 4, 2021 (Draft #1)

On-line version of this paper:

<https://www.hayden-island.com/wp-content/uploads/2021/07/Community-Garden.pdf>